

Flip Flop Grill®

Assembly and Operational Instructions

**THERE IS NO GRILL IN THE WORLD THAT DOES CHICKEN BETTER!
WE GUARANTEE IT!**

(Patent No. 3599624)
Manufactured in Bloomer, Wisconsin USA
311 Riggs Street
Bloomer, WI 54724
Phone: 715-568-2882

“The Camper”



Caution: Never cook indoors, toxic fumes may accumulate and cause death.

Do not use gasoline, alcohol or other highly volatile fluids to ignite charcoal since they can explode causing personal injury. Use a commercially prepared fire starter.

Warning: Grill surface can be extremely hot, may cause severe burns if touched directly during use or after.

NOTE: Read all warnings and instructions carefully before assembling or operating your grill. Use caution and common sense when operating your grill.

Welcome to the world of the Flip Flop Grill®. The Flip Flop Grill® has been custom developed and engineered to provide years of trouble-free service. With proper care and cleaning, the Flip Flop Grill® will last a lifetime.

The following assembly and operational instructions have been compiled to support your initial set-up and assembly. After completing the initial set-up, we are confident the simple snap together design will provide fast and convenient assembly.

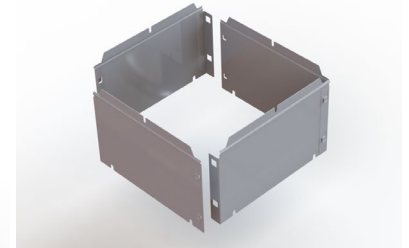
Assembly Instructions

The Flip Flop Grill® consists of nine custom components, manufactured of rust-resistant aluminized steel along with a nickel chrome coating of specific components. Please note that during the first few times of assembly, the components may fit together somewhat tightly. After a number of assemblies and disassemblies, the tolerances of the components will allow an easier fit for assembly.

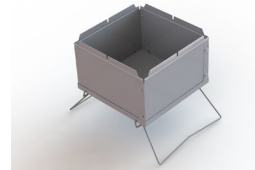
1.



2.



3.



1. Assemble the (2) legs by holding the bottom panel and aligning the ends of the legs into the pre-punched holes. Position legs as illustrated, separate slightly until the legs are inserted into the pre-punched holes.

Once assembled, the legs have been designed to be simply folded under the grill bottom providing a compact package, which fits back into the original shipping box for storage and handling.

2. Hold the side panels vertically and align the tabs into the notch side opening of the adjacent side panel. Slide the side panel downward as shown to lock the side panels together. Continue the process for complete assembly of the (4) side panels.

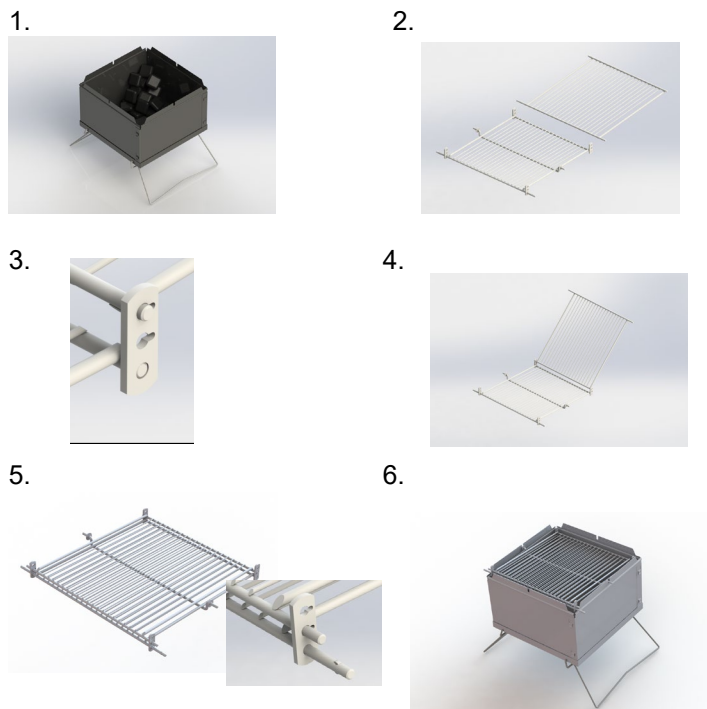
HELPFUL HINT: Prior to placing the assembled side panels onto the bottom panel, place a layer of aluminum foil across the entire bottom and fold across the sides. The aluminum foil reflects additional heat upward for cooking, along with assisting in the easy clean-up of the grill after usage.

3. Place the assembled sides onto the bottom panel. Ensure the side panels are pressed firmly down and fit evenly against the bottom panel.

Operational Instructions

Your Flip Flop Grill® has been custom designed for exceptional cooking of chicken. However, by following some simple helpful hints, the Flip Flop Grill® provides outstanding results on all your other favorite grilling foods – from hot dogs, hamburgers, brats, steaks, fish, ribs and

many more. For best grilling results, follow these recommended operational instructions.



1. One layer of charcoal is sufficient to properly cook a full grill of chicken. (Approximately 3 cut full-sized chickens).

We recommend placing the charcoal against one corner of the grill arranged in a tapered pile. Light the charcoal using only a commercially available starter fluid. Once the charcoal has begun to turn a uniform white color, carefully spread the charcoal evenly across the bottom utilizing a small shovel or board to safely spread the charcoal.

2. The lower grill has been fabricated with (2) welded tabs and (2) rotating tabs. The upper grill has matching notches, which are utilized to lock the (2) grills together and provide a hinge action.
3. With the (2) grills lying fully flat and open, as illustrated, slide the smooth longer end of the upper grill into the desired hole in the welded tab of the lower grill. (Lower holes are recommended for hot dogs, brats, hamburgers, etc. and the upper holes for chicken). The opposite end of the grill has been stamped with tabs which simply align into the corresponding locking tab to form the pivot hinge
4. Place the food onto the grill and sandwich the food by folding the top grill section. The key to successful "flipping" is to properly weight the grill toward the extended grill ends.
5. Slide the locking tab over the ends of the upper grill securing the food product for charcoaling.
6. Place the grill into the notches in the assembled grill side panels. Periodic "flipping" of the grill provides even cooking. Charcoaling in windy conditions may

require lifting the grill assembly and rotating 180° on the side panels for even heat and cooking distribution.

Warning: Do not use water on the grill assembly when hot, as it may cause warpage of the side and bottom panels.

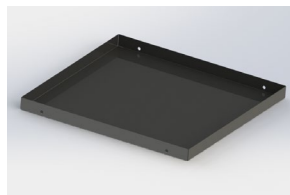
Limited Warranty

For one year from the date of purchase. The Flip Flop Grill® Company will repair or replace components of the grill if defective in material or workmanship. If such defect has not been caused by improper use, failure to provide reasonable maintenance or damage. To receive warranty service, call 715-568-2882 for return authorization and/or instructions for replacement.

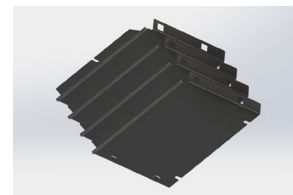
Except as above stated, the Flip Flop Grill® Company makes no representation or warranty, express or implied, or merchantability, fitness for a particular propose or any other representation or warranty.

This warranty specifically excludes any liability for indirect, incidental, or consequential damages. Customer acknowledges that the purchase price charged is based upon the limitations contained in the warranty set out above. Some states do not allow the exclusions or limitation of incidental or consequential damages, so the above stated exclusions or limitations may not apply to you. This warranty gives you specific legal rights and you may also have other rights, which vary from state to state.

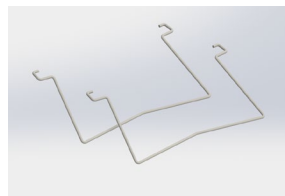
Replacement Parts "The Camper"



Bottom



Side Panels



Legs



Grill Assembly

Grill dimensions are 16" x 16" Model "Camper"

<u>Quantity</u>	<u>Part Description</u>
1	Bottom Panel
2	Support Legs
4	Side Panels
1	Grill Assembly

Replacement parts are available; please contact the Flip Flop Grill® Company at 715-568-2882 for pricing.